



DAVOS SENDAI

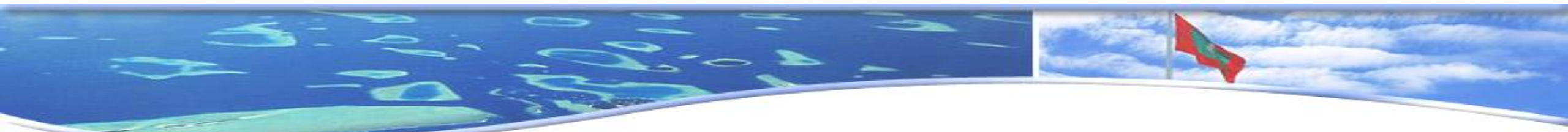
WORLD BOSAI FORUM

IDRC 2017 in SENDAI
International Disaster and Risk Conference 2017, Sendai, JAPAN
世界防災フォーラム／防災ダボス会議@仙台

November 25-28, 2017
Sendai International Center



Regional Cooperation and Partnerships
27 Nov 2017

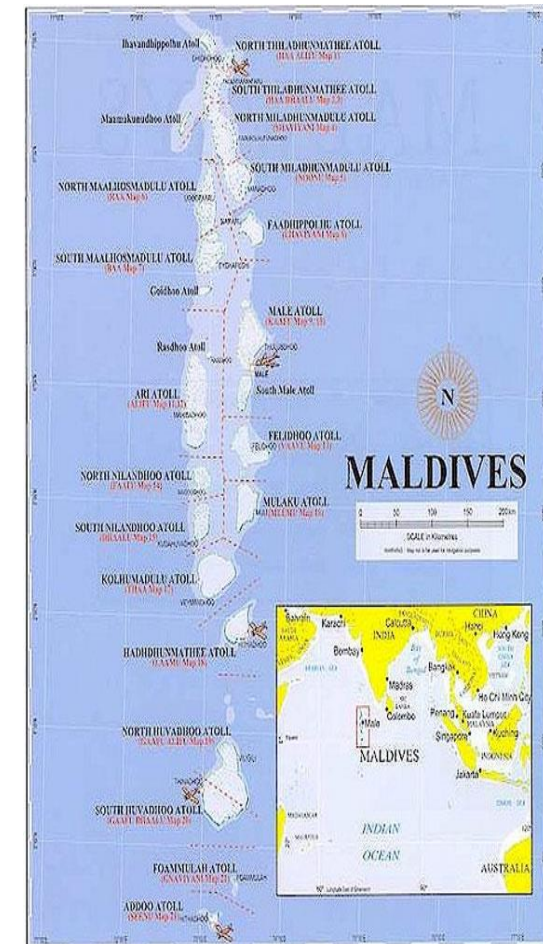


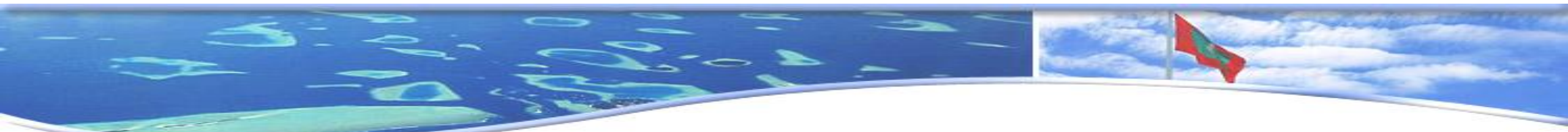
Maldives is highly vulnerable to coastal hazards and the impact of climate change



- ✓ Area: 90,000 sq km
- ✓ Population: 350,000
- ✓ Total number of islands: 1,200
- ✓ Number of inhabited islands: 200

- ✓ All these islands on average are 1 meter above msl.
- ✓ No rivers or mountains (some islands have ponds & wetlands)
- ✓ Vulnerable for climate change & Sea level rise





Maldives is highly vulnerable to coastal hazards and the impact of climate change

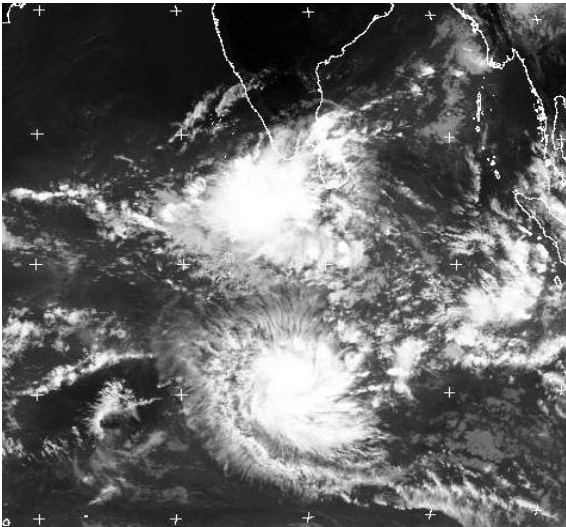
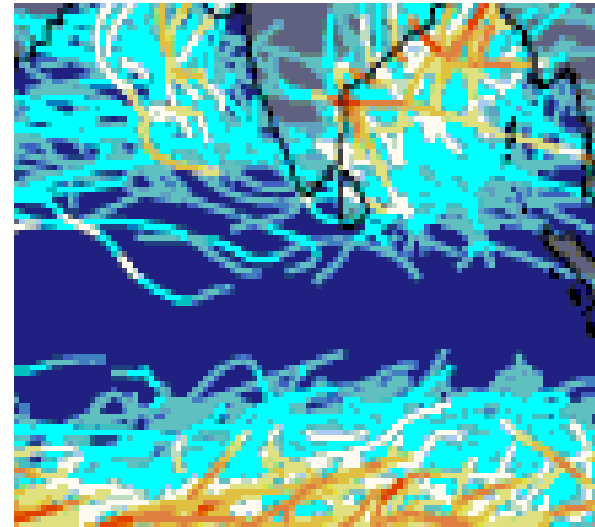
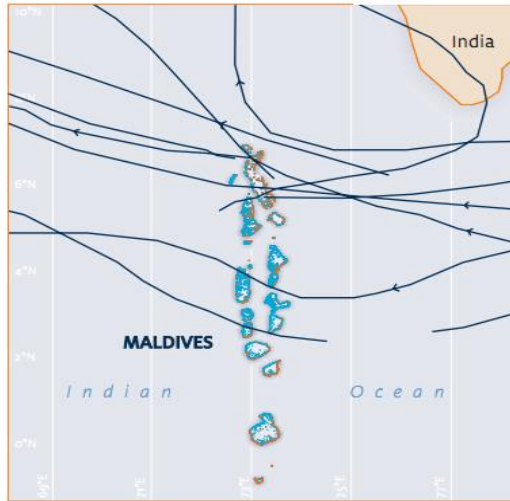


Figure 4.5: Cyclone tracks over Maldives between 1877-2004



Heavy rain / flood
Strong winds and rough seas
High swell / Wind waves
Tornado / waterspout
Thunderstorms / lightning strike
Tropical storm / cyclones





World Meteorological Organization

WMO / ESCAP

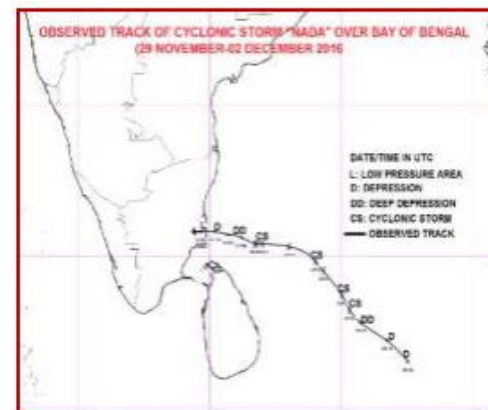
Panel on Tropical Cyclones for the Bay of Bengal & the Arabian Sea



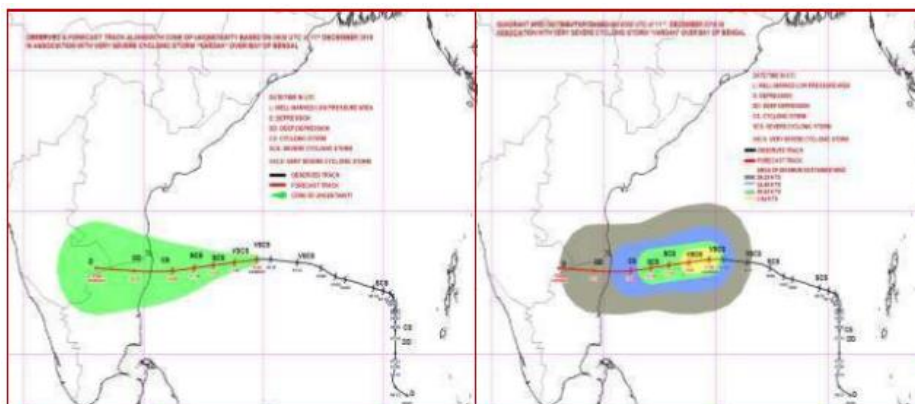
United Nations Economic and Social Commission for Asia and Pacific



43RD SESSION OF WMO/ESCAP PANEL ON TROPICAL CYCLONES (NEW DELHI, INDIA FROM 2ND – 6TH MAY, 2016)

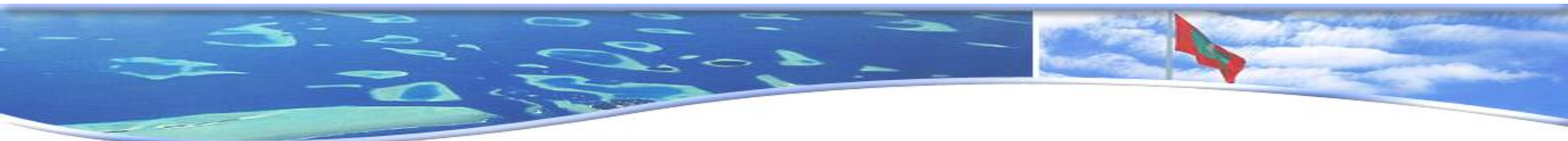


Group Photograph of WMO's RSMC Training Participants (19-30 September, 2016) and Dr. K.J. Ramesh, DGM, IMD and Dr. M. Mohapatra, Sc.G (Services) and Head RSMC New Delhi



Forecast track with cone of uncertainty and wind distribution based on 0530 IST of 11th December 2016





UNITED NATIONS
ESCAP

Economic and Social Commission for Asia and the Pacific



YEARS OF CONNECTING
ASIA AND THE PACIFIC

