

Development of an application
to be future "disaster info-hub"
for saving Japan's next-generation

LPP (Life Protect Plan)

What shall we do ?



TEAM LPP (Life Protect Plan)

1 active firefighter

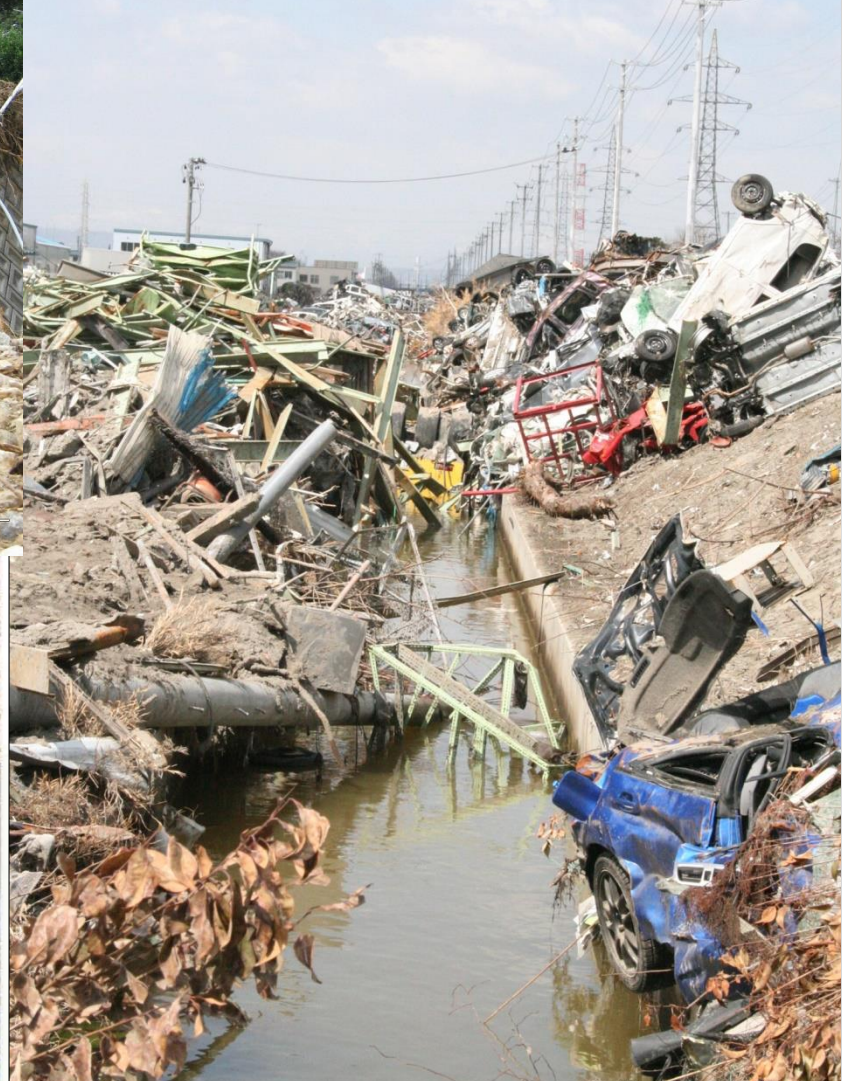
2 ex-firefighters

2 powerful support members

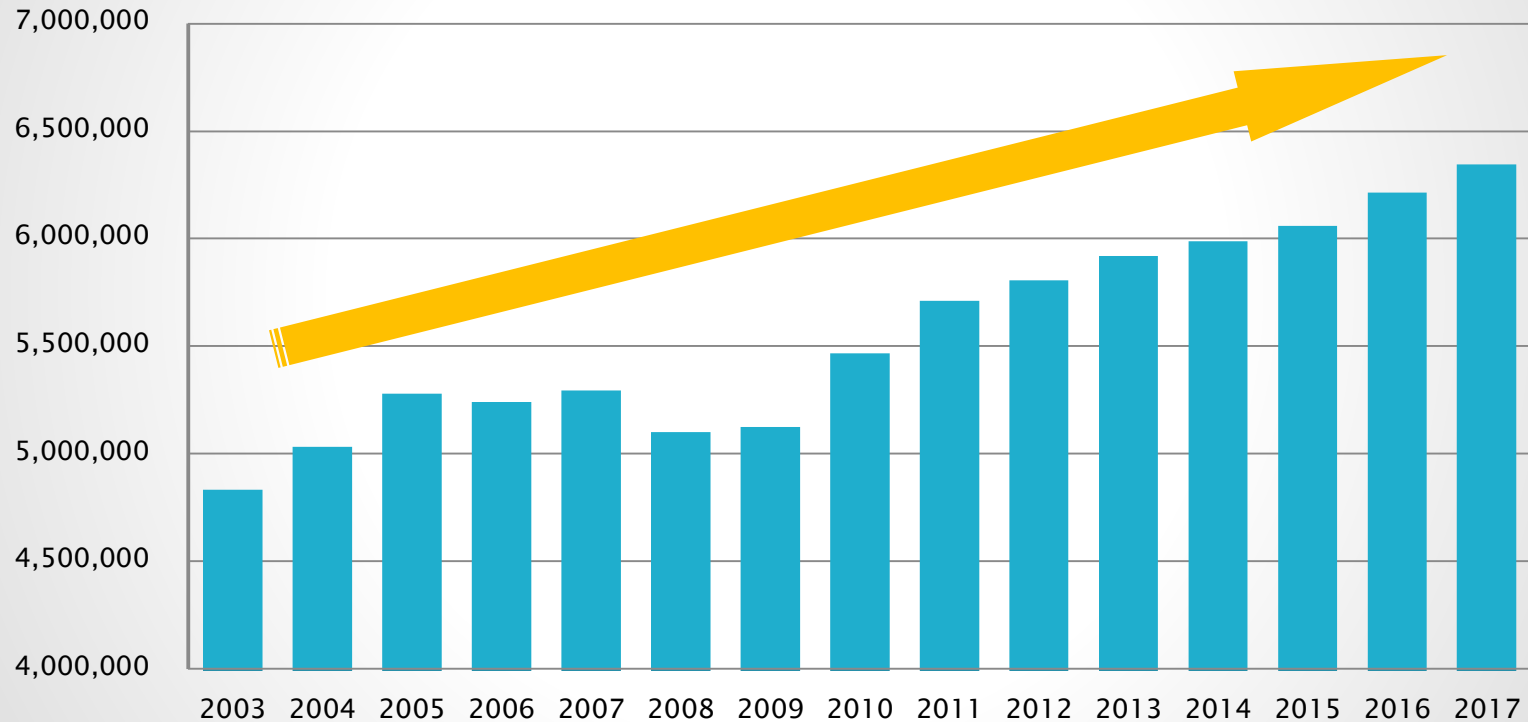


PUBLIC and PRIVATE





Emergency dispatches has drastically increased.



Time of arrival of an ambulance has extended.





119 Fire and Disaster hotline will blow out.

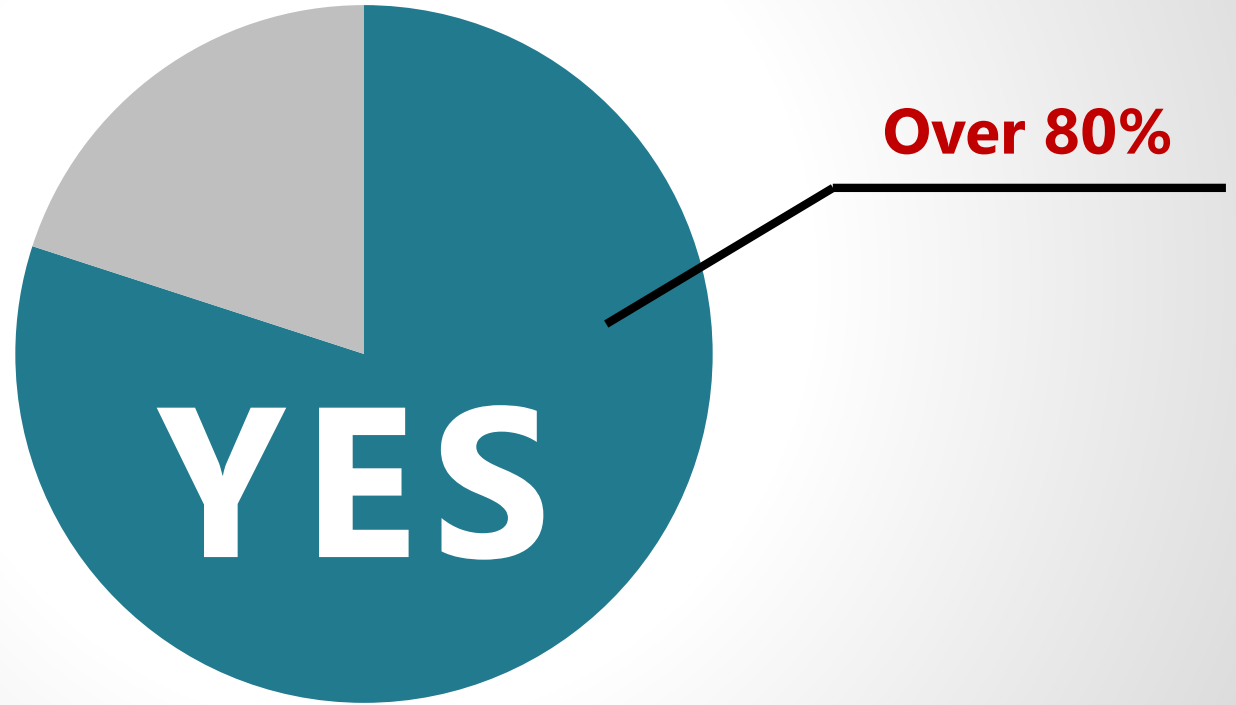


Cannot call 119



There is **no** "trriage system"

439 firehouses asking if there should be a triage system





“Limit of public assistance”


The app we plan to develop has mainly 3 functions

- 1 Judgment of severity and urgency of patient by AI
- 2 Matching of help seeker and helpers
- 3 Confirmation of safety information by GPS

1 Judgment of severity and urgency of patient by AI

- ▶ AI will analyse its severity and urgency from level 1 to 10.
- ▶ Attaching information of location and emergency level.
- ▶ This information will be visualized.
- ▶ Firehouses can locate their resources in the order of emergency level.

2 Matching of help seeker and helpers

- ▶ Platform where people who need help and people who want to help.
 - ▶ Location will arrive at the smartphone.
 - ▶ It will be a solution for the limit of public assistance, and support self-help and mutual assistance.
- 

3 Confirmation of safety information by GPS

- ▶ It will be connected to disaster alert notifications and inform the location of your important person.
- ▶ Lets you know where your important person is by GPS.
- ▶ It will be notified of dangerous or risky areas and be encouraged to evacuate.

**Aiming to break through the limit of
public**

