

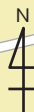
Sendai Lunch Map

International Center Area

*This map was made with the permission of the director of National Geographic and uses their electronic topographic map. (Authorization number 平30東使第4号)

*The prices of meals and information of each restaurant was collected during February and March 2019. The information provided is subject to change after publication. All illustrations, maps and photos are copyrighted.

0m 50m 100m



Fusion Kaffe tomte

Japanese Tempura Santaro

Western Welcome

Indian RAJ

Western cafe enishie

Chinese Koryu

Chinese Sendai Chinese Funku

Western La Sarten

Japanese Gengochaya

Japanese Shochikuzendokoro

Western Bistro Chez Harmonie

Fusion café mozart Métro

International Center Station

Subway Tozai Line

Fusion café mozart Klee's coffee

Japanese Bali Bali

Sendai International Center

Omachi Nishi-koen Station

Aoba-dori Ave.

Sendai Lunch Map



International Center Area



How to see pictograms

- ...OPEN
- ...CLOSED
- ...SEATS
- ...LANGUAGES
- ...PRICE RANGE (Lunch)
- ...SPECIAL MEAL

*The menu is subject to change according to the season.

Tempura Santaro

1-20 Tachimachi, Aoba-ku
TEL022-224-1671

[map E-2] **Japanese**



Special assorted Tempura served on rice 1,666yen+tax

- Lunch: 11:30~14:00*It depends on menu. Dinner: 17:00~22:00
- Mon./One Sun. in a month/Summer holidays/End of year and new year holidays
- 24 counter seats/48 table seats
- Only available in Japanese
- 980~5,500yen

Gengochaya

1-1 Sakuragaoka-koen, Aoba-ku
TEL022-222-2830

[map D-3] **Japanese**



Michinoku set meal 920yen+tax

- 11:00~LO17:00
- Irregular
- 48 table seats
- Only available in Japanese
- 1,000yen

Shochikuzendokoro

1F Grandview Omachi
2-10-23 Omachi, Aoba-ku
TEL022-225-5591

[map D-3] **Japanese**



Gofudaizen set meal *Limited to 15 dishes 1,500yen+tax

- Lunch: 11:30~LO14:00
Dinner: 17:30~LO21:00
- Sun./End of year and new year holidays
- 8 counter seats/12 table seats
- English
- 800~3,000yen
- Antiallergic

Bali Bali

1F Villa Foresta
2-2-2 Omachi, Aoba-ku
TEL022-262-1940

[map E-3] **Japanese**



Lady's Gozen set meal *Men can also order. 1,379yen+tax

- Lunch: Mon.~Fri. 11:30~14:30 (LO14:00)
Dinner: Mon.~Fri. 17:30~23:00 (LO22:00)
Sat./Sun./Public holiday: 17:00~22:30 (LO21:30)
- End of year and new year holidays
- 50 table seats/3 private rooms
- Only available in Japanese
- 1,000yen

Welcome

1F Arthur bldg.
6-19 Tachimachi, Aoba-ku
E-mail speakeasy.gs@gmail.com

[map D-2] **Western**



WELCOME BREAKFAST 1,389yen+tax

- 8:30~16:00
- Irregular
- 11 table seats
- Only available in Japanese
- 1,389yen

cafe enishie

2F HALBLD
2-6-17 Omachi, Aoba-ku
TEL022-797-6605

[map E-3] **Western**



Seasonal pasta 1,000yen+tax

- 11:00~20:00 (LO19:30)
*Lunch time is until 14:00
- Tue./Irregular
- 20 table seats
- Only available in Japanese
- 1,000yen

Bistro Chez Harmonie

1F Choseido bldg.
2-7-11 Omachi, Aoba-ku
TEL022-398-6456

[map E-3] **Western**



Sauteed fish lunch 1,018yen+tax

- Lunch: 11:30~15:00 (LO14:00)
Dinner: Tue.~Sat. 18:00~23:00 (LO21:00)
- Mon./The 3rd Tue./Summer holidays/Winter holidays
- 5 counter seats/25 table seats
- English/French
- 1,000~1,500yen

La Sarten

1F Nishikido bldg.
2-6-3 Omachi, Aoba-ku
TEL022-215-0633

[map E-3] **Western**



Sarten lunch course 1,203yen+tax

- Lunch: 11:30~15:00 (LO14:00)
Dinner: 17:30~24:00 (LO23:00)
- *Fri. Sat. and day before public holidays open until 2:00 (LO1:00)
- Tue./Summer holidays/End of year and new year holidays
- 45 table seats
- English
- 1,001~1,500yen

Koryu

2-7-15 Omachi, Aoba-ku
TEL022-222-9908

[map E-3] **Chinese**



Daily lunch 700yen+tax

- Lunch: 11:00~15:00
Dinner: 17:00~22:00
- Sun./31 Dec.~3 Jan.
- 50 table seats/50 Tatami seats
- Only available in Japanese
- 700yen

Sendai Chinese Funku

1F Yamakawa bldg.
2-11-1 Omachi, Aoba-ku
TEL022-211-8233

[map E-3] **Chinese**



Shirunashi Tantanmen noodles (Spicy and no soup) 834yen+tax

- Lunch: 11:30~14:30 (LO14:00)
Dinner: 17:30~22:00 (LO21:00)
- Tue./The last Wed. of the month/Irregular/End of year and new year holidays
- 4 counter seats/6 table seats
- Only available in Japanese
- 695~1,112yen

RAJ

2-8 Tachimachi, Aoba-ku
TEL022-263-1035

[map E-2] **Indian**



RAJ select set 900yen+tax

- 11:00~23:00
- End of year and new year holidays
- 9 counter seats/20 table seats
- English/Hindi
- 580yen~
- Halal/Vegetarian

Kaffe tomte

#103 Lions Mansion Nishi-koen No.3
18-12 Tachimachi, Aoba-ku
TEL080-4938-0038

[map D-2] **Fusion**



Today's tomte lunch 1,111yen+tax

- 11:30~LO14:00
- Sun./Mon./Public holidays/End of year and new year holidays
- 7 counter seats/13 table seats
- Only available in Japanese
- 1,111yen

café mozart Klee's coffee

Inside Tohoku Univ. Kawauchi Hagii Hall,
40 Kawauchi, Aoba-ku
TEL022-265-3022

[map A-3] **Fusion**



Khao Man Kai (with a drink) 972yen+tax

- 10:30~17:00
*Lunch: From 11:00/Limited quantity
- Tue./Irregular
- 50 table seats
- English
- 1,000~1,100yen

café mozart Métro

2F Subway International Center Station
2-1 Aobayama, Aoba-ku
TEL022-266-6675

[map B-3] **Fusion**



Beef tongue and sinew stew 830yen (incl. tax)

- 9:00~18:00
- Open in accordance with the International Center
- Over 50 table seats
- English
- 500~1,000yen